

TMHP

TEXAS MEDICAID
&
HEALTHCARE PARTNERSHIP

A STATE MEDICAID CONTRACTOR

**TMHP EDI
CONNECTIVITY GUIDE**

TABLE OF CONTENTS

1.0	Introduction.....	3
2.0	TMHP Electronic Transactions.....	4
2.1	EDI Transactions	4
2.2	TMHP Receiver ID Numbers.....	5
3.0	Technology Requirements	5
3.1	Telecommunications.....	5
3.2	File Compression Techniques	5
3.3	File Transfer Protocol (FTP) Requirements.....	5
4.0	Establishing a Connection to TMHP	6
4.1	TMHP's Cisco AnyConnect VPN Client Installation	6
5.0	File Transfer Protocol.....	8
6.0	Hyper-Text Transfer Protocol (HTTP) Instructions	11
7.0	TMHP File Naming Conventions.....	12
7.1	Files Sent to TMHP	12
7.2	Files Sent From TMHP.....	12
7.3	Downloadable Files	12
8.0	Contacting TMHP Electronic Data Interchange Support	13
8.1	Enrollment and Testing Information.....	13
	APPENDIX A - MICROSOFT DOS BASED FTP CLIENT PROGRAM	14
	APPENDIX B - WS_FTP PRO.....	16

1.0 Introduction

ACS State Healthcare LLC, under contract with the Texas Health and Human Services Commission, is responsible for processing Texas Medicaid EDI transactions. ACS meets its Medicaid responsibilities with a team of subcontractors, using the name **Texas Medicaid & Healthcare Partnership (TMHP)**.

Note: TMHP EDI is not part of the ACS EDI Gateway.

Transactions are accepted electronically into TMHP EDI via FTP and are processed through Compass21 for Acute Care Transactions and CMS for Long Term Care.

The purpose of this guide is to outline the procedures for submitting transactions and retrieving responses and/or reports.

Note: This guide does not apply to TexMedConnect Users or Care Forms Users.

Audience

This guide is intended for Trading Partner use in conjunction with the ANSI X12N 5010 Implementation Guides (available at <http://www.wpc-edi.com>) and the TMHP Companion Guides (available at <http://editesting.tmhp.com>). A Trading Partner is defined as any entity trading data with TMHP EDI. This includes vendors, clearinghouses, providers (other than those using TexMedConnect, and billing agents).

2.0 TMHP Electronic Transactions

2.1 EDI Transactions

The following electronic transactions are available through TMHP.

Inbound Transaction	Inbound Format	Response	Response Format	Comments
270 Eligibility Inquiry	ANSI X12 5010	271 Eligibility Response	ANSI X12 5010	
276 Claim Status Inquiry	ANSI X12 5010	277 Claim Status Response	ANSI X12 5010	
	Proprietary	CSI Supplemental	Proprietary	Long Term Care
278 Request for Review	ANSI X12 5010	278 Response	ANSI X12 5010	
837 Professional Claim	ANSI X12 5010	277CA Claims Acknowledgement	ANSI X12 5010	Acute Care
				Long Term Care
837 Institutional Claim	ANSI X12 5010	277CA Claims Acknowledgement	ANSI X12 5010	Acute Care
				Long Term Care
837 Dental Claim	ANSI X12 5010	277CA Claims Acknowledgement	ANSI X12 5010	Acute Care
				Long Term Care
		835 Electronic Remittance & Status	ANSI X12 5010	Acute Care
				Long Term Care
		277P Claim Activity	ANSI X12 5010	Acute Care
				Long Term Care
Financial Supplemental	Proprietary	Long Term Care		

2.2 TMHP Receiver ID Numbers

Trading Partners should use the TMHP Receiver IDs listed below. In addition, in the ISA07, Interchange Receiver ID Qualifier, you should send the qualifier ZZ.

ACUTE CARE

TMHP Production Receiver ID: 617591011C21P

TMHP Test Receiver ID: 617591011C21T

LONG TERM CARE

TMHP Production Receiver ID: 617591011CMSP

TMHP Test Receiver ID: 617591011CMST

3.0 Technology Requirements

3.1 Telecommunications

TMHP supports the TMHP VPN Client, using a high-speed Internet connection, to connect to our network.

For Trading Partners with a high-speed internet connection, we recommend connecting to our network over the public internet by utilizing the TMHP provided Cisco VPN Client.

3.2 File Compression Techniques

TMHP accepts compressed files with PKZIP or WINZIP compression techniques for zip files as well as non-compressed files.

3.3 File Transfer Protocol (FTP) Requirements

TMHP requires File Transfer Protocol (FTP) as the method for transferring files and retrieving responses. As a result, you do not need other communication software packages (e.g. XMODEM, YMODEM, ZMODEM, or Kermit) to transfer files.

4.0 Establishing a Connection to TMHP

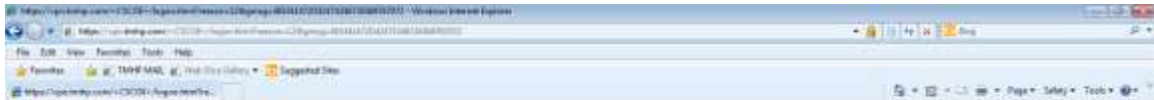
4.1 Installation Requirements

To connect to the TMHP Electronic Data Interchange (EDI) using the new VPN solution, AnyConnect, please follow these instructions.

These instructions are for persons running Windows 7 with Internet Explorer. The use of any other operating systems and/or web-browsers will have similar steps to complete. However, support using any other operating system or web-browser will be best effort only.

Note: *You will need to have elevated privileges or permissions to install software onto any computer that is used for AnyConnect.*

1. **Open Internet Explorer and go to <https://vpn.tmhp.com>.** The TMHP Anyconnect VPN portal page will be displayed.



2. Select **TMHP_EDI_VPN** from the Group drop-down menu. Enter your **user name** in the user name field, **without tmhp.net in front** of it. Enter your **tmhp.net network password** in the **Password** field.
3. What about the 2nd password?

Note: *There will be two entries in the group drop down field containing EDI_VPN,*

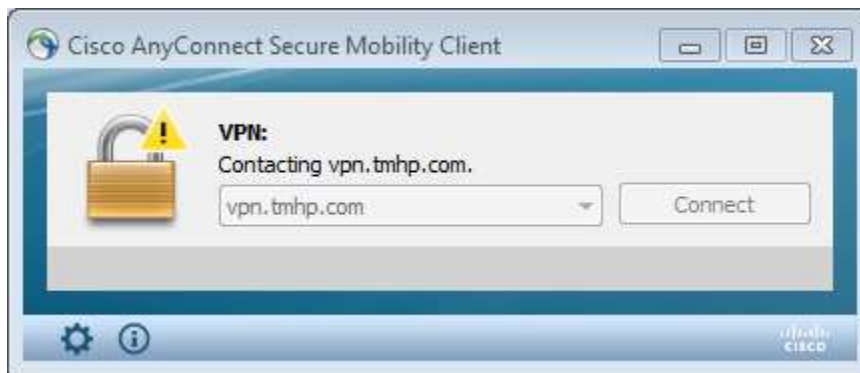
both of them will work until April 30, 2014. After April 30th, only TMHP_EDI_VPN will work.

4. After the installation process has been completed, you will be connected to TMHP using the Cisco AnyConnect VPN.

Connecting to TMHP Using the Cisco AnyConnect VPN Instructions

After you have installed the Cisco AnyConnect VPN Client, you will be able to connect to TMHP for EDI transactions. Follow these instructions to connect with the Cisco AnyConnect VPN client.

1. Go to **All Programs>Cisco>Cisco AnyConnect Secure Mobility Client>Cisco AnyConnect Secure Mobility Client**. The Cisco AnyConnect VPN client window will appear.



2. Click **Connect**. The Cisco AnyConnect VPN identification window will be displayed.
3. Select **TMHP_EDI_VPN** from the Group drop-down menu. Enter your **user name in the user name field, without tmhp.net in front of it**. Enter your **tmhp.net network password in the Password field**.
4. What about the 2nd password field?

Note: *There will be two entries containing EDI_VPN, both of them will work until April 30, 2014. After April 30th, only TMHP_EDI_VPN will work.*

5.0 File Transfer Protocol

Once you have connected to the TMHP Network with a VPN connection, you are ready to transfer or retrieve files using File Transfer Protocol (FTP).

The FTP servers will be running 24 hours a day, 7 days a week. This availability is subject to scheduled and unscheduled host downtime. It is operational policy to schedule preventive maintenance periods on weekends whenever possible.

To logon to the TMHP FTP server, you will need an FTP client program or Microsoft Windows Explorer. Microsoft Windows Explorer Version 5.0 and later has built-in FTP functionality. In addition, there are many FTP client programs available either commercially or as Internet downloadable shareware (e.g. WS_FTP Pro, etc).

FTP Instructions – Microsoft Windows Explorer

The instructions below are based on accessing the TMHP EDI FTP server using Microsoft Windows Explorer. Please refer to the Appendix to access instructions for other FTP methods.

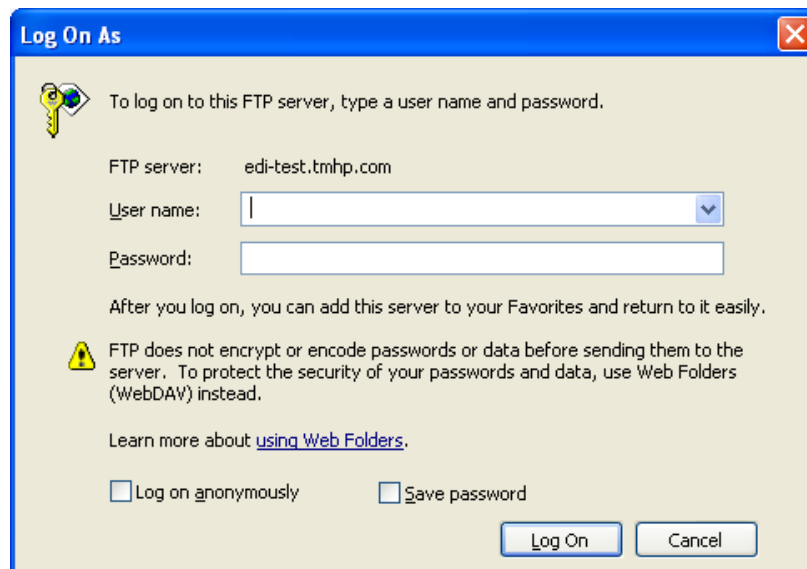
Logging on to the TMHP EDI FTP Server

1. Open Microsoft Windows Explorer (5.0 or above).

In the address line type <ftp://edi.tmhp.com> for production or <ftp://edi-test.tmhp.com> for test and press **ENTER**.

2. In the menu bar, click on **File/Login As** then enter your Submitter ID and Password at the **User Name** and **Password** prompt. Click **Logon**. Note: If you experience problems with your Submitter ID and Password, please contact us at:

EDI Helpdesk: 1-888-863-3638 or **E-Mail Us:**



Uploading Files

1. Once you are logged on (as described above in Connecting to TMHP) a window will display with the following two folders: download and dropbox. The directory where these folders are located is your home directory.
2. Move the file that you wish to transfer to TMHP by dragging and dropping or copying and pasting to your home directory. Note: The directory path will not display /home; you can tell that you are in the home directory if you can see both /dropbox and /download folders.
3. The last step is to rename the file that you uploaded, and move it from your home directory into the /dropbox directory. When the file has finished uploading to your home directory, right click on the filename and click **Rename**. The filename will be highlighted. Rename the file to any name that is different from the original filename. For example, original filename: "12345678.txt", new filename: "12345678.dat". Rename the file with the /dropbox path as part of the filename. (For example: /dropbox/12345678.dat). This command moves the file into the dropbox for processing. Another way to move the file is to drag and drop the renamed file, 12345678.dat, into the /dropbox folder.

Downloading Files

1. Once you are logged on (as described above in "Connecting to TMHP") a window will display with the following two folders: download and dropbox. The download folder will be used for retrieving files from TMHP.
2. Double click on the download folder to determine if there are any files to download. To download, right-click on the file and then click **Copy to Folder**. In the pop-up window that appears, choose the appropriate location for the file on your local drive.

6.0 Hyper-Text Transfer Protocol (HTTP) Instructions

HTTP is the protocol that will be used to submit **Interactive** files. The submitter will post their valid X12 transactions to <http://edi-web.tmhp.com/TMHP/Request> for production files and <http://edi-webtest.tmhp.com/TMHP/Request> for test files.

Posting Real-Time Transactions

To post production files, open Microsoft Internet Explorer and enter the following TMHP EDI Web Server URL in your Web browser: <http://edi-web.tmhp.com/TMHP/Request>. The browser builds an HTTP request and sends it to the Internet Protocol address (IP address) indicated by the URL. The transaction should be posted on Port 80 as a text message in the ANSI 5010 X12 format. Do not include headers, trailers, HTML tags, etc.

The post to the URL is synchronous (e.g. the response to the request is returned to the same session the request was submitted on). If there are errors, a negative 999-or TA1 response file will be returned to the submitter. Errors that are not related to HIPAA or message formatting will cause a timeout for the submitter. Submitters should set the timeout interval at 30 seconds.

7.0 TMHP File Naming Conventions

7.1 Files Sent to TMHP

Trading Partners will send files with a .dat or .zip file extension. Once we receive the file, we will rename the file with a unique TMHP assigned Batch ID.

Note: Please do not send path information with your .zip files. This will cause your files to error out in the TMHP EDI poller and as a result, no response files will be returned to the submitter.

7.2 Files Sent From TMHP

TMHP uses the following naming conventions for downloadable files. The format for files you will retrieve from TMHP is as follows.

- The first 8 characters are the TMHP assigned 8 alpha numeric Batch ID.
- The last 3 characters represent the file extension (refer to the table below for the TMHP file extensions). Example: D1234567.999

7.3 Downloadable Files

Transaction	File Extension	Description
Batch ID Report	BID	Report that identifies the TMHP assigned Batch ID. The .BID filename includes the TMHP assigned Batch ID which may be utilized for tracking purposes. The naming convention for this file is: Submitter ID + Batch ID + Filename + .BID. (For Example: 987654321.D44083FS.12345678.dat.BID. In this example, the TMHP Batch ID is D44083FS). For zip files, the filename within the zip file will be sent back to the submitter inside the .BID file.
Functional Acknowledgment	999	File acknowledgment for CMS and C21.
Application Reporting	824	For non-claims. Reports errors that are outside of 999 error reporting, and to report results of an application system's data content edits of transaction sets.
Eligibility Inquiry Response	271	Response to the 270 for CMS and C21.
Prior Authorizations	278	Prior Authorizations (PA) in the portal application process and the MCPA portal process, for authorization that are received via the Portals.
Claim Status Inquiry	277	Response to the solicited 276 for CMS and C21.
Claims Acknowledgment	27A	Response from the 837 for C21 claims.
	27L	Response from the 837 for CMS claims.
	27E	Response from the 837 for Encounter claims.
Claim Payment Advice	835	Weekly finalized claim remittance for CMS and C21.
Pending R&S (Claim Activity)	277	Weekly pending and finalized claim remittance for CMS and C21.
CMS CSI Supplemental File	Z13	CMS (LTC) Supplemental File that contains claim status data not covered by HIPAA.
CMS Financial Supplemental File	Z04	CMS (LTC) Supplemental File that contains financial data not covered by HIPAA.
Extract Report	EXT	Report that indicates accepted and rejected transactions.

8.0 Contacting TMHP Electronic Data Interchange Support

The TMHP EDI Help Desk assists users with questions about electronic submissions.

EDI Helpdesk: 1-888-863-3638 or **E-Mail Us:**

8.1 Enrollment and Testing Information

Successful testing must be completed in order to submit transactions to TMHP. **(NOTE: This does not apply to TexMedConnect users)**. A Trading Partner agreement should be completed prior to testing.

To facilitate provider testing, TMHP has made Edifecs, a web-based, self-testing tool, available to all providers and trading partners. Once a trading partner has received a "Testing Invite Letter" with their assigned user ID and password, they can log on to <http://editesting.tmhp.com>. Trading Partners can download and sign a Trading Partner Agreement, download Companion Guide(s), and then test and validate their HIPAA-compliant transactions. A signed Trading Partner Agreement is required prior to testing.

If a Trading Partner has not received a user ID and password, they can register at <http://editesting.tmhp.com>. TMHP will generate an email letter to the Trading Partner with the user ID and password to use for logging on to the Edifecs site.

Please refer to the guidelines below to determine if testing applies to you:

- 1) Submitters that plan to submit transactions directly (e.g. through their own system and not through a vendor or clearinghouse) to TMHP, are required to sign a Trading Partner Agreement and successfully test on the TMHP Edifecs site.
- 2) Software Vendors that plan to submit transactions to TMHP, are required to sign a Trading Partner Agreement and successfully test on the TMHP Edifecs site.
- 3) Software Vendors that do not plan to submit transactions to TMHP, but have clients who submit transactions to TMHP, do not need to sign a Trading Partner Agreement, but they must test on the TMHP Edifecs site. Clients of these Software Vendors must sign a Trading Partner Agreement and successfully test with TMHP.
- 4) Clearinghouses that plan to submit transactions to TMHP are required to sign a Trading Partner Agreement and successfully test on the TMHP Edifecs site.

APPENDIX A - MICROSOFT DOS BASED FTP CLIENT PROGRAM

FTP Instructions

1. Open a DOS prompt (start/run/cmd or start/run/command).
2. Type **>ftp edi.tmhp.com for production or >ftp edi-test.tmhp.com for test** and press **ENTER**. The DOS window will display connection information.
3. Type your Submitter ID at the **User** prompt and press **ENTER**.
4. Type your Password and press **ENTER**.

Note: You may only send and retrieve files for the Submitter ID you are logged in as. If you have multiple Submitter IDs, you will need to begin a new FTP session for each Submitter ID.

Uploading files using FTP after connecting to TMHP

1. After typing in your Submitter ID and Password, an ftp> prompt will be displayed. You will be logged into your home directory.
2. Type **bin** and press **ENTER** (This command is used to transfer files in binary mode. Files must be transmitted in binary mode.) A message will display “200 Type set to I.”
3. Type **dir** and press ENTER to display the contents of the home directory (to make sure there are not any files remaining to be moved to dropbox).
4. Type **put [yourfilename.dat] [yourfilename.dat]** and press **ENTER**.

Note: The “put” command moves your file from your home directory to the FTP directory; <yourfilename> is the name of the file you wish to transmit. The second entry of <yourfilename> can be the same as the first <yourfilename> or you may use a different name. For example: put <A12345.txt> <A12345.dat>. **Files must be sent with a .dat or a .zip extension.** Please do not send path information with your .zip files. This will cause your files to error out in the TMHP EDI poller and as a result, no response files will be returned to the submitter.

5. Then use the rename command to move the file to the upload directory.

```
ftp> rename [filename.dat] \dropbox\filename.dat
```

Note: Files must be uploaded to the default directory and then renamed to the dropbox directory. Uploading directly to the dropbox may cause incomplete files to be submitted.

Downloading files using FTP after connecting to TMHP

1. After typing in your Submitter ID and Password, an **ftp>** prompt will be displayed. You will be logged into your home directory.
2. Type **bin** and press **ENTER** (This command is used to transfer files in binary mode).
3. Type **dir** and press **ENTER** to display the contents of the home directory (to confirm there are files to pick up)
4. Type **cd** to change directory to \download\Batch.
5. When you determine which file to download, type **get** and the filename then press **ENTER**.

```
ftp> get 12345678.999
```

Note: The file name must exactly match the file name in the home directory.

6. When the download is complete. A “Transmission Successful” message will appear.

Logging Off

1. Exit the FTP process by typing **quit** at the ftp> prompt and pressing **ENTER**.
2. Exit the DOS window by typing **exit** at the prompt and pressing **ENTER**.
3. End the TMHP connection by finding the modem icon on the bottom right of the screen and clicking it. This will bring up the Connection Status window. Click the button to disconnect.

APPENDIX B - WS_FTP PRO

When WS_FTP Pro starts up on your computer, the Connect to Remote Site window will appear on top of the application. This is the window you will use to create your site profile and ultimately make your FTP connection.

If this dialog does not appear when you start the application, select Connect from the File menu on the Classic interface of WS_FTP Pro.

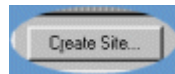
You are now ready to create your site profile.

As you read the directions here, follow along in WS_FTP Pro.

1. Select the MySites folder from the Sites list.



2. Click the Create Site button.



The New Site Wizard appears.

This New Site Wizard walks you through the steps of setting up your site profile.

1. In the Name box, type the name you wish to use for your connection.
2. Make sure MySites appears in the Create In box.
If anything other than MySites is in the Create In box, click the Browse ... box and select MySites from the list.
3. Click the Next > button.
4. In the Host Name or IP Address box, type:
This is the internet address to the FTP site you are connecting to.
5. Click the Next > button.
6. In the User ID box, type: Your current Submitter ID
7. In the Password box, type: Your assigned Password
8. Select the Save Password option.
9. Click Finish.

As soon as you click Finish, the Wizard closes and you will see your TMHP site profile in the MySites folder.

You have just made your TMHP site profile, and now you are ready to make your first connection!

1. Select the TMHP site name you assigned in the MySites folder.
2. Click the Connect button.



The Connect to Remote Host window closes and WS_FTP Pro will attempt to make the FTP connection.

The first step in downloading a file, is finding the folder you want to download the file to (the transfer destination). This is done in the Local System (left-hand side) pane of the WS_FTP Pro window.



3. Click the folder button to the right of the current directory box. The Browse for Folder dialog appears.
4. Click on the folder where your file is located.



5. Click the OK button at the bottom of the Browse for Folder dialog.

The contents of your folder will now be in the Local System box. This is the place the downloaded file will be stored.

Look at the list in the right pane of the WS_FTP Pro window. This is the Remote System list. You will see a display with the following two folders: download and dropbox.

To upload a file


1. Click on the dropbox folder.
2. Select the file you wish to upload.
3. Click the upload arrow between the two panes. (This is the green arrow that points to the right.)
The Transfer Manager appears showing the status of the transfer.

When the transfer is complete, the text on the Transfer Manager will show that your transfer has 'finished.' When you see that, click back on the WS_FTP Pro window.

When you are ready to download files, choose the download folder in the right-hand window of WS_FTP Pro. The download folder will be used for retrieving files from TMHP.

Double click on the download folder to determine if there are any files to download.

To download a file:

1. Select the file you wish to download.
2. Click the download arrow between the two panes. (This is the top green arrow that points to the left.)

3. The Transfer Manager appears showing the status of the transfer.

When the transfer is complete, the text on the Transfer Manager will show that your transfer has 'finished.'